

Great Day! Scheduled Tour Summary

NEW HAMPSHIRE'S MOOSE & FIELDS OF PURPLE LUPINES, NOW WITH LAKE GEORGE BRUNCH CRUISE SAT-WED, JUNE 10-14, 2023

Departures, as applic: Parma/Cleve.West, Middleburg Hts, Independence, Beachwood/Orange, Mayfield, Ashtabula.

This tour coincides with the blooming lupine wild-flower fields in New Hampshire's White Mountains. The beauty of those fields is just one part of this tour as we see the state's largest mammals grazing, moose weighing up to 1000 pounds and standing 6 feet at the shoulder. And, capping this tour off, we will be riding the Tramway, a mountain-climbing railway, to enjoy the beauty even more.



The brilliant spikes of the lupine flowers carpet local fields and pastures in a rolling sea of **vibrant purples**, pinks, blues, and whites. The long-lasting blossoms attract equally dazzling butterflies, creating a breathtaking floral display against the majestic backdrop of the Northeast's spectacular mountain region.

Lake George was first inhabited by the Iroquois Indians. European settlers gradually arrived in the area and, in 1775, it was renamed "Lake George" in honor of King George II. We will be enjoying a Sunday Brunch Cruise aboard a Steamboat. Be sure to bring your camera to capture the many photo opportunities we will be seeing during our cruise or when we stop to view the beautiful flowering lupine.

Enjoy a horse-drawn wagon ride through the Christmas tree fields in, of all places, "Bethlehem", New Hampshire. It's best known as "The New Hampshire State's Christmas Tree Farm" but, beyond the neat rows of Christmas trees and lines of stone walls, lies a world of history and wildlife. Their vegetable garden is of special interest due to its *"agro-eco tourism flair"*.



GREAT DAY! TOURS & CHARTER BUS SERVICE . . . (440) 526-5350 . . . (800) 362-4905

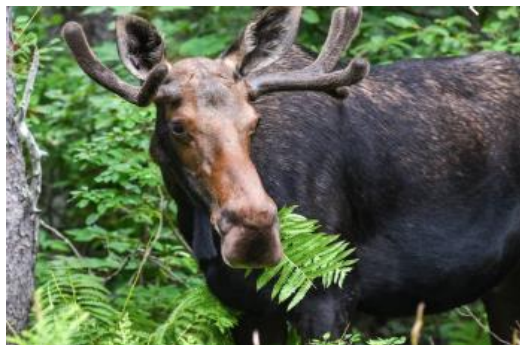
All tour details are anticipated at the time that the Scheduled Tour Brochure was prepared and specific stops and/or other inclusions are subject to change or elimination without notice. Tours typically depart between 6 AM and 8 AM with the exact time shown on the itinerary you will receive approximately one to two weeks prior to the tour departure. Most tours return about 8 PM to 10 PM, although this may vary.

We will also be taking a ride to the Summit of Mount Washington, in Bretton Woods, on what was the world's first mountain climbing cog railway. Pulled by a biodiesel or steam engine, it is similar to the Pilatus Railway in Switzerland and called, by some, "the railway to the moon".



Other stops include the White Mountain Canning Company where our hosts will be inviting us to sample some of the many varieties of jam, honey, pickles, sauces, olive oil and balsamic vinegar . . . all made in small batches with ingredients from local suppliers. We've also planned a visit to a candy company with plenty of samples.

Another of the eleven included meals has been planned at the **Omni Mount Washington Hotel**. Completed in 1902, it took two years and 250 craftsmen skilled in masonry and woodworking to complete this luxury New England retreat that has been frequented by Presidents, Poets and Celebrities. Enjoy dining, as did Thomas Edison, Babe Ruth and three U.S. Presidents.



magnificent **moose** is "breathtaking".

We'll be traveling aboard the **Cannon Mountain Tramway** that offers spectacular rugged mountain scenery and the towering peaks of the Franconia and Kinsman Mountain ranges. You'll be able to view Maine, New Hampshire, Vermont and even Canada from the summit.

We will be going out with a Tour Guide in his bus for the Evening Moose Tour, seeing these gentle giants in their natural habitat and the sight of a

NEW HAMPSHIRE'S MOOSE & FIELDS OF PURPLE LUPINE – JUNE 2023

Includes 11 meals, including dining during our Lake George Cruise

\$1464 pp in a double

\$1444 pp in a triple

\$1424 pp in a quad

\$1720 pp in single

**Now with Sunday
Brunch Cruise**

Deposit to book, \$100 per person; we accept all major credit cards and checks.

Tours can now be booked online, 24 hours a day with a credit card.

GREAT DAY! TOURS & CHARTER BUS SERVICE . . . (440) 526-5350 . . . (800) 362-4905